



DREAMING TREE

3DSVG.COM

PRODUCT DESIGNER/ ART DIRECTOR: RON GUTMAN
ARTIST: DIANA TAM

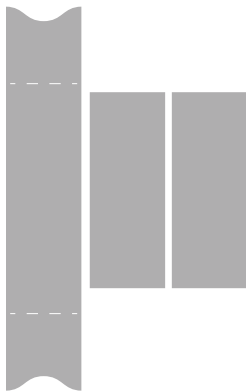
SCHOOLHOUSE GIFT BOX



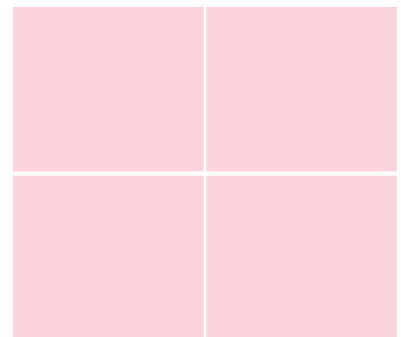
SUPPLIES NEEDED:

- 2 SHEETS OF 12X12 WHITE CARDSTOCK
- 1 SHEET OF 12X12 LEAF CARDSTOCK
- 1 SHEET OF 8.5X11 ROUGE CARDSTOCK
- 1 SHEET OF 8.5X11 MUSTARD CARDSTOCK
- 1 SHEET OF 8.5X11 STONE CARDSTOCK
- 1 SHEET OF 8.5X11 PATTERN PAPER
- RHINESTONES "OPTIONAL"
- FAUX PEARLS STICKERS "OPTIONAL"
- ZOTS "OPTIONAL"
- STRING "OPTIONAL"
- GLUE

4" WIDE
BAND_STONE.SVG



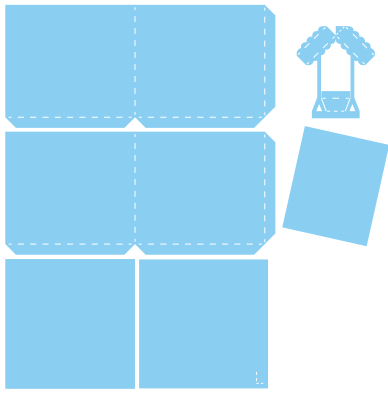
7.3" WIDE
BOX_PANELS_PATTERN.SVG



COPYRIGHT 2015 DREAMING TREE. FOR DETAILED HELP AND INSTRUCTIONS USING THESE FILES WITH YOUR CUTTING MACHINE AND/OR SOFTWARE, PLEASE VISIT WWW.3DSVG.COM/HELP - ASSEMBLY VIDEOS ARE LOCATED ON THIS PRODUCT'S PAGE AT WWW.3DSVG.COM



11.1" WIDE
BOX_PORCH_WHITE.SVG



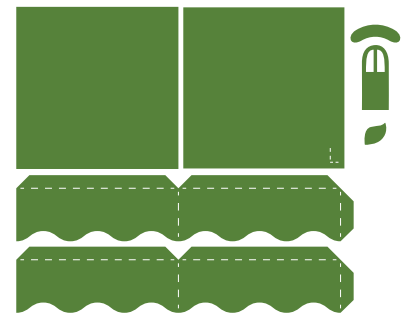
9.6" WIDE
HOUSE_PANELS_ROUGE.SVG



8.6" WIDE
HOUSE_WHITE.SVG



9" WIDE
LID_DOOR_LEAF.SVG



9.1" WIDE
ROOF_BELL_MUSTARD.SVG

